

Happy New Year From Everyone At MOKA!

moka



### New Year, Same Life Changing Mission

This 2022 can you commit to helping us - *"Create opportunities for independence and acceptance in our communities by supporting children and adults with developmental and intellectual disabilities in making choices, building relationships, sharing places, developing skills, enhancing reputations and contributing back."*

## **MOKA in the MEDIA**

We are excited to share that MOKA has been featured nationally for our Care of the Caregiver (COC) initiative!

Care of the Caregiver was developed to support our employees through grief, loss and other difficult situations they may face at work. When we care for ourselves, and each other, we are able to continue to care excellently for those in need (both at work and for those we love and care for in our personal lives). Those that make up our COC team are also MOKA employees who have been trained in Critical Incident Stress Management.

We are very thankful for our COC team and the work they have done to support our frontline workers! To read the full article on MOKA's Care of the Caregiver (COC) initiative click the button below.



[Read about Care of the Caregiver here!](#)

**Check out our Blog: The MOKA Minute to read our 2021 Wrap-Up by clicking the button below!**

[Click here for our 2021 wrap-up!](#)



### **MOKA spends time with Blandford Nature Center**

Volunteers from MOKA's Community Supports program love spending time out at Blandford Nature Center and cannot wait to return come spring!

"We are so thankful for the wonderful individuals from MOKA that volunteered weekly at Blandford throughout the summer and fall! These volunteers worked together to help maintain our Pioneer Garden during the summer growing season, and clear large sticks and debris from our accessible trail during the fall.

We are happy to provide an outdoor space for MOKA to enjoy while volunteering and we look forward to having them back on-site again in the spring," said Blandford Nature Center when recognizing the volunteer work of persons served.



### **Ottawa Community Supports collects over 120 pounds of food items for Harvest Stand Ministries**

MOKA's Ottawa Community Supports Program recently hosted a food drive benefiting Harvest Stand Ministries. With collection drops located around Ottawa county CS was able to collect over 120 pounds of food items.

These food items were donated in full to support families living with food insecurity in Zeeland.

Thank you to everyone who had a hand in making this a success! We are so grateful for all of the hard work done by persons served to collect these much needed food items. We are also so grateful to the community for giving to those in need!

We are so thankful to be part of the wonderful work being done at Blandford Nature Center!

We are excited to share our new tenant

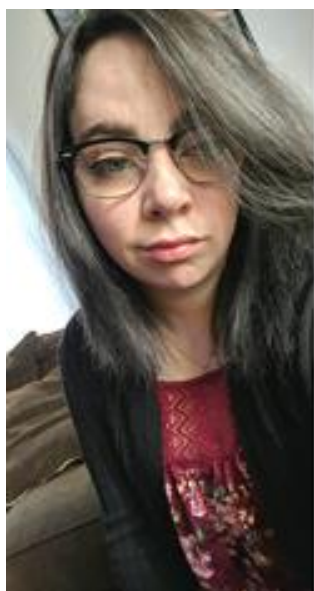
## MUSKEGON CO-OP FEDERAL CREDIT UNION

officially opened at their new location:  
715 Terrace St. in Muskegon.

Congratulations, we're wishing you all the best!



We're Hiring! Visit [www.moka.org/careers](http://www.moka.org/careers) to check out all available positions.



Even if you don't see it every day, you are making a difference. It is up to us to make sure the energy in the homes is happy, to laugh as much as we can, and to comfort when it is needed. While this is a job, it feels like more than that to me. It makes me feel needed.

BRANDI TUCKER  
RESIDENTIAL SUPPORT STAFF



As a Direct Support Professional, Brandi provides care for people with intellectual and developmental disabilities living in our Residential Homes, including time spent in the community. We appreciate your commitment to ensuring those you support live a happy and meaningful life, Brandi!

Do you know someone interested in becoming a Direct Support Professional? Visit <https://www.moka.org/careers/> to view a detailed job description.

**Thank you to everyone who was part of our Year End Fundraiser!**

**Would you still like to contribute to one of MOKA's Year End designations? It is not too late to make a donation towards:**

**Care Coordination** Care Coordination creates an opportunity to support the coordination, facilitation, and integration of mental and healthcare needs for people with IDD by promoting coordination between the behavioral and physical health treatment provider. As well as to assure health management resources and information are accessible to the individual with IDD and to their paid and/or unpaid support network. The Care Coordinator role within MOKA focuses primarily on individuals receiving long-term services and supports in specialized residential or higher acuity settings.

**Community Supports Arts Inclusion** From the Holland Arts Council to Fredrick Meijer Gardens, MOKA's Community Supports Program has found great success in supporting the creativity and expression of individuals served by partnering with local artists to make art more accessible to the IDD population. Additional funding in this area would allow individuals served to gain access to otherwise unreachable art programs and classes in the West Michigan community.

**Making a House a Home this Holiday** The joy and warmth you feel in your home when it is set up for the holidays are no different than the warmth and joy we want to be able to bring to our residential homes when the snow finally rolls through. Your support in this area will be used to add the special spark of "home" where individuals served need it most. From necessities like furnishings our newest Waterfall Trail residence - to knocking that extra soft throw blanket off of Graceland's wish list, your loving support will change lives this holiday season.

Click the donate button to make life changing impact today!

[\*\*Donate Today!\*\*](#)

**Don't forget to follow us on social media to keep up with all of MOKA's current initiatives!**



Like Us on  
FB



Follow us on  
Instagram



Follow us on  
LinkedIn

[Unsubscribe](#)

MOKA

715 Terrace STE 201 Muskegon, MI 49440